

# USER MANUAL

## HOW TO ASSEMBLE YOUR NEW BED



# CONTENTS

---

	PAGE NO
Welcome & Preparations: .....	3
Electrical Components: .....	4
Upholstery Care: .....	5
Operating Your Adjustable Bed: .....	6
Helpful Hints: .....	7
Relaxor: .....	8 - 10
Guarantee Terms: .....	11
Warranty Service: .....	11
Rules Of Safe Usage: .....	12
Specification: .....	13
Adjustable Bed Handsets: .....	14
Our Range: .....	15
Assembly Instructions: .....	16 - 18
Base Assembly: .....	19 - 21
Action Placement: .....	22 - 24
Headboard Assembly: .....	25 - 27
Mattress: .....	28 - 29
Shallow Base: .....	30
Draw Bed: .....	30
Notes: .....	31

## **CONGRATULATIONS ON YOUR ADJUSTABLE BED PURCHASE.**

We are delighted that you have chosen a Bodyease British quality handmade bed. Your product has been designed for comfort, quality, reliability and simplicity of use. The classic design, components and years of experience in manufacturing ensure your complete satisfaction.

Please read this instruction manual carefully before you attempt to operate your bed.

Make sure you understand all the instructions thoroughly.

Please note that standard adjustable beds are guaranteed for use by persons up to maximum weight 18 stones.

## **PREPARATIONS.**

---

You first need to decide where you would like to place your new Adjustable Bed. It should be located near to a power socket and in close proximity of a telephone, or some other means of communication, so that in case of a power failure or without an attendant, help can be easily summoned.

For your safety, your bed is powered by a 24 volt DC motor and low voltage hand set. The domestic mains power of 240 volts is reduced to a low and safe operating voltage by an integral transformer. If your bed is situated on a wooden or concrete floor, small insulating squares, made up of unused carpet material will minimize the possibility of motor vibration.

## ELECTRICAL COMPONENTS

---

Your product operates on a standard household electrical supply. Simply plug it into a standard three prong socket. If you require an extension, make sure an approved adaptor is used. If the plug is not suitable for your socket, it should be carefully removed and replaced with a suitable plug. If the colors of the wires in the mains lead of this appliance do not correspond with the colored markings identifying the terminals in your plug, proceed as follows:

- The wire, which is colored blue, must be connected to the terminal that is marked with the letter N or colored black.
- The wire, which is colored brown, must be connected to the terminal, which is marked with letter L or colored red.

### **IMPORTANT**

The wires in this mains lead are colored in accordance with the following code:

Blue:        Neutral  
Brown:      Live

Fittings marked are double insulated and do not need to be earthed, in all other cases earthing is **essential**.

If a three-pin plug is used a 5-amp fuse must be fitted either in the plug or adaptor. If the plug is replaced by a fuse less plug a 5-amp fuse must be fitted at the distribution board. Do not connect the Live or Neutral wires to the Earth terminal.

**WARNING:** During power failure, the bed/recliner will remain in the same position as at the time of the power failure. Normal bed/recliner functions will operate when power is restored. If motor is fitted with a battery backup the bed can be returned to a flat position in the event of a power failure. Check and replace the battery annually.

**WARNING:** Please note the electrical parts on your bed are not waterproof. Liquids must not come into contact with any electrical component on your bed.

## UPHOLSTERY CARE.

---

**DUST & GRIT** should be removed frequently from the bed's upholstery pile. If this is allowed to build up it could shorten the life of the fabric. Give your upholstery a regular light brushing, either with a soft brush or the special attachment on your vacuum cleaner. Brush first against the lay of the pile to raise it, and then brush again in the opposite direction.

**SPILLS** should be blotted up immediately with a clean towel. If the spill is of a staining nature (coffee, urine, red wine etc.) consult a specialist cleaning service found in Yellow Pages under Carpet and Upholstery Cleaners. or online.

**CAUTION** Do not use any solvent such as petroleum-based cleaners, lighter fuel, carbon tetrachloride etc. Do not over-wet area. If in doubt always consult a specialist cleaning service.

**CREASING** is likely to occur on upholstery which has a velvet feel to its fabric. This is particularly noticeable on headboards and footboards and is due to pressure. However, this is a natural characteristic of this fine fabric and does not, in any way whatsoever, detract from the exceptional hardwearing qualities of the cut pile material. The application of a clean hot damp towel to the affected area will help raise the nap. Follow this by brushing the nap back in the direction of its lay when dry. This should remove stubborn creases.

**CAUTION** Do not soak the fabric as this may cause the backing to shrink.

**PLEASE NOTE: YOUR BED IS NOT WATERPROOF.**

## OPERATING YOUR ADJUSTABLE BED

To adjust your bed into various positions, use the buttons on the hand control(see Fig.1).  
Press the diagram buttons to raise and lower the bed into the most comfortable position(see Figs.2, 3, 4, and 5).

Your bed is infinitely variable for you to find the best position to relax in.

When you wish to get out of the bed, push the raise back button. The bed will gently lift you to a secure upright position allowing easy movement out of the bed.

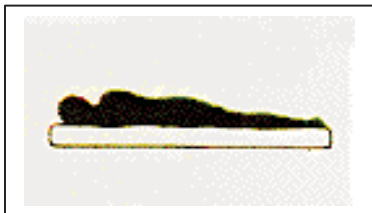
**CAUTION** Do not allow children to play on this mechanized furniture or operate the mechanism. The bed folds down on closing so a child could possibly be injured. **Always** leave the bed in a lowered position.

*Keep hands and feet clear of working mechanism.*

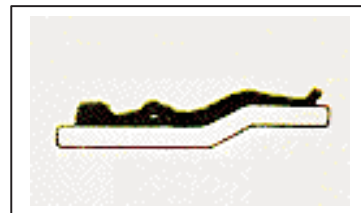
**NB:** We strongly recommend using fitted sheets on all our mattresses in our Adjustable beds range.



Fig 1



LOWERED POSITION  
FIG 2



LEG RAISED  
FIG 3



BACK RAISED  
FIG 3



BACK AND LEGS RAISED  
FIG 4

## HELPFUL HINTS

---

You should treat your Adjustable Bed as you would any piece of fine furniture. You should also respect it as a valuable piece of electrical equipment. Exercise great care in the use and treatment of your product and enjoy the years of comfort, which it will give to you.

**IF YOUR PRODUCT FAILS TO OPERATE** and before you contact your supplier you should first consider the following points:

### **HAND CONTROL IS PRESSED AND BED DOES NOT OPERATE**

#### **Possible causes and solutions:**

- Power cord is unplugged from wall socket or wall socket is switched off: Replace plug into wall socket and switch on.
- Hand control is unplugged from motor: Replace plug into motor.
- Fuse in power cord has blown: Replace with a 5-amp fuse.
- Main's fuse or circuit breaker has tripped at distribution board: Replace fuse or reset circuit breaker.  
*CAUTION: If fuses continually blow, consult an electrician immediately, DO NOT use your bed.*
- 800MA fuse blown in motor protection circuit: Consult your supplier.  
**NOTE:** The drive unit is a sealed unit. Entry to the unit during the warranty period may invalidate your guarantee.
- Operator has not maintained constant pressure on the hand control switch: Continue constant pressure on the switch until the action moves into position.
- Hand control switch is damaged: Contact your supplier to replace switch.
- Handset or Motor failed. / Contact your supplier

### **MOTOR WILL NOT SHUT OFF**

#### **Possible causes and solutions:**

- Control switch may be damaged or sticking: Contact your supplier to replace hand control or motor circuit.

### **MOTOR WILL NOT OPERATE IN EITHER DIRECTION**

#### **Possible causes and solutions:**

- The motor is equipped with a thermal overload protection device. The motor on your bed is not designed for constant operation (as in the case of a child moving the bed constantly up and down). If the thermal device is activated, wait around thirty minutes for the motor to cool down and the overload device to reset before trying to restart the motor. If the problem continues, contact your supplier.

### **MOTOR RUNS BUT BED DOES NOT RISE OR LOWER**

#### **Possible causes and solutions:**

- Motor actuator has been overloaded, the maximum lift weight has been exceeded (see bed specifications) or the bed has been operated with an obstruction against the headboard or footboard.

You are now able to have the full benefits of the soothing massage that has proven to therapeutically regenerate tired, knotted muscles, relieve the tension of stressful living and provide an overall dimension of quality relaxation.

The **Relaxor** is a scientifically designed electro-mechanical system, with multiple pulsing transducers, strategically located, to give you a wave-like motion over your entire body, at the rate of speed and intensity that you specifically choose.

Total relaxation through finger-like pressure massage now is yours to command. We know you will enjoy your new Relaxor System. **A winning combination for your comfort!**

## IMPORTANT SAFETY INSTRUCTIONS

*Read all instructions before using the Relaxor.*

**DANGER** – To reduce risk of electric shock:

- Always unplug the product from the electrical outlet immediately after using and before cleaning.
- **Do not** reach for a Relaxor that has fallen into water. Unplug immediately.

**WARNING** – To reduce risk of burns, fire, electrical shock or injury to persons:

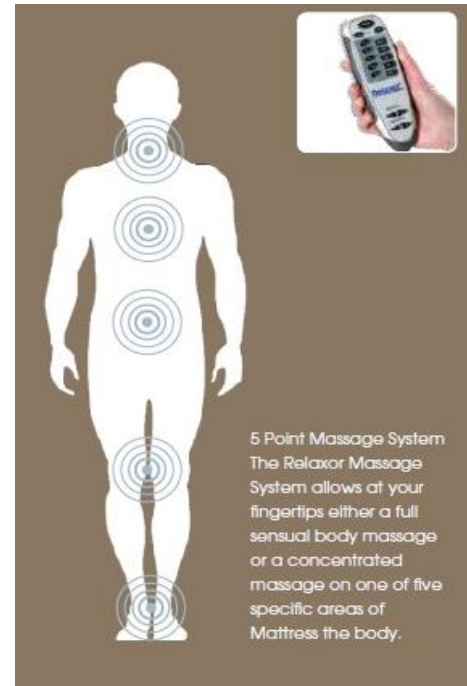
- The Relaxor should never be left unattended when plugged in. Unplug from outlet when not in use and before putting on or taking off parts.
- Use this product only for its intended use as described in this manual.
- Never operate the Relaxor if it has a damaged cord or plug, if it is not working properly, if it has been dropped or damaged, or dropped in water. Contact your dealer for instructions on returning it for examination and repair.
- Close supervision is necessary when this appliance is used by or near children, invalids or disabled persons.
- Keep the cord away from heated surfaces.
- Do not operate where aerosol (spray) products are being used or where oxygen is being administered.

USE ONLY THE ADAPTOR SUPPLIED WITH THIS PRODUCT

## MAINTENANCE INSTRUCTIONS

No user maintenance of this product is required. If the System does not function, be sure...

- The A.C. ADAPTOR is plugged into an electric outlet.
- The A.C. ADAPTOR and CONTROL TRANSMITTER cord are plugged into, and fully engaged, in their respective receptacles.





## OPERATING INSTRUCTIONS

1. Join the plug from the cable on the CONTROL TRANSMITTER to the matching receptacle, which exits from your Relaxor. Align arrow on the plug cable with the arrow on the receptacle. Push both parts firmly together.
2. Leave the POWER switch on the CONTROL TRANSMITTER in the OFF (up) position.
3. Plug the cord from the AC ADAPTOR into the remaining receptacle coming from your product and then plug the AC ADAPTOR body into the electrical wall outlet. (230 volts – AC12V AC 2.917A DTOP)
4. Lie on the mattress. Start by following the next instructions to familiarize yourself with the System operation.
5. Push the POWER button down to the ON position. You can now manually position the massage action to any of five body locations. Each time you press the zone buttons from 1 to 5, this will allow you to choose the position of the massage, as indicated by the red position lights on the CONTROL TRANSMITTER. Now push the INTENSITY button up (+) or down (-) to determine the best intensity for you. Push the SPEED button up (+) or down (-) to control pulsing frequency of massage motors in PULSE mode and controls the velocity as it cycles through in WAVE mode.
6. Push the WAVE button down, press any or all zones (1-5) to activate, now feel the massage move up and down in a wave-like action. PRESS the PULSE button down, press any or all zones (1-5) to activate, this will allow the motors to turn ON and OFF to stimulate a PULSING action. You can also move your body left and right until you get the maximum effect. By pushing the SELECT button down, press any or all zones (1-5) to activate, this allows you to choose any or all zones for massage
7. To turn off any zone press any or all zones (1-5) to cancel.

You have now completed all of the operational choices provided on the CONTROL TRANSMITTER. Select any combination of the above-described modes, intensities and auto cycle speeds.



The Relaxor System unit can also be set on a timer of 15 minutes by pressing the Power button ON, the GREEN LIGHT showing. To set the Timer for 30 minutes hold down the power button until the light changes to AMBER. The massage unit is automatically shut down after 15 - 30 minutes of operation depending on the timing set. To restart, simply release power switch to OFF, then press again to turn ON.

Now close your eyes and enjoy your **Relaxor**.

**NOTE:** It is normal for the CONTROL TRANSMITTER to become warm during use.

## GUARANTEE TERMS

---

This guarantee applies only to parts supplied or approved on behalf of our company. **The Guarantee is with the original purchaser and is nontransferable.**

### EXCLUSIONS

This guarantee does not extend to those items which may need replacement due to normal wear and tear i.e., fuses, fabric, upholstery fillings or damage to the product caused by misuse or accident for which we or our agents cannot be held responsible.

This Guarantee does not apply if your product shows signs of excessive wear and abuse or has been modified without the authority of our company.

Service of the motor actuator must only be carried out by one of our local authorized suppliers. Any attempt to open or dismantle this item renders the Guarantee null and void.

This Guarantee applies to you only if the product was purchased by you as new equipment. This guarantee does not extend to purchasers of used equipment or to contract hire equipment.

*NOTE: This Guarantee applies to the United Kingdom only.*

### DISCLAIMER

Our Company disclaims all responsibility for any personal injury or property damage, which may occur as a result of improper or unsafe use of its product. Mechanical or electrical defects will be dealt on a contingency liability basis. The part or parts will be replaced or repaired but no responsibility for damage or injury can be implied to our company or its agents. The guidelines outlined in this manual are intended to assist you in the safe operation of your bed. If you should have any questions about the correct operation of your bed, please contact your authorized company dealer.

*Consult your doctor or therapist if you are in doubt about your suitability to use the bed.*

**We disclaim all responsibility for damage or faulty parts if the bed has been relocated by others.**

## WARRANTY SERVICE

---

- Before contacting your supplier see the 'Helpful Hints' section of this manual.
- Discontinue using your bed immediately upon discovering a defect.
- Contact the supplier from whom you purchased the product for instructions on what to do.
- You should furnish your supplier with proof of the purchase date.
- This Warranty does not cover damage resulting from any abuse, misuse, unauthorized repairs, negligence, accident, alteration or modification of the product. If damage is caused by poor transport or mishandling, **a claim must be made upon or within seven days of delivery.**
- We shall not be liable for any special, indirect or consequential damage.
- *Warranty applies to the United Kingdom only.*

## RULES OF SAFE USAGE

---

Your Adjustable Bed is an innovative and finely designed piece of furniture. It is also motorized and should be treated with respect.

Your Bed will provide years of trouble-free service and comfort, if you follow these helpful hints:

For your safety, your bed is powered by a 24-volt DC motor and low voltage handset. The domestic mains power of 240volts is reduced to a low and safe operating voltage by an integral transformer situated in the motor actuator assembly.

DO NOT let children play with this adjustable bed, as they may injure themselves or others.

MAKE CERTAIN children do not place their fingers between the mechanism or let them or animals sit under the bed, when it is in the raised position. Failure to observe this warning may risk injury.

DO NOT allow any liquids to come in contact with the hand switch or other electrical components.

DO NOT allow foreign objects to come into contact with the mechanical lift or recline mechanisms i.e., limbs, walkingsticks etc.

DO NOT allow children or pets to play near the bed while it is in

operation. DO NOT overload your bed beyond its design

specification.

DO NOT make adjustments or service repairs to your bed without first unplugging the power cord from the mains power supply.

DO NOT alter or modify your bed, this may contravene the manufacturers

guarantee. DO NOT operate your bed if you notice a change from the normal

operating sounds.

DO NOT get into, or out of, or sit on the bed whilst the mechanism is in use- the frame must be in the lowered position to avoid damage.

DO make certain that the mattress is fitted correctly and properly located within the bed frame. Failure to observe this warning may put you in an unsafe situation. (See Preparation section of this manual).

DO switch your bed off at the wall socket or remove the plug from the wall socket, when not in use or when

cleaning. DO wipe off spills and dirt quickly so that staining will be minimized.

DO inspect your bed regularly to make sure it is in full working order.

(See Service section of this manual)

DO turn your mattress regularly.

# Your Safety Should Always Come First!

## SPECIFICATION

### Adjustable Bed Motor



Performance data	
Load capacity max.	4500 N on each side (for safety reasons, no pull force)
Adjustment speed <sup>1</sup>	max. 5.5 mm/sec.
Stroke length back rest:	87 mm
leg rest:	69 mm
Fitting dimension installation length:	708 mm
component height:	120 mm
axle distance:	581 mm (+/- 2 mm)
axle diameter:	25 mm
Duty cycle	2/18 min. or 10 %, max. 5 switching cycles per minute
Control unit	relay-free control
Motor voltage maintenance-	free 24V DC motor
Components	
Limit switch	with micro switch
Housing color	black RAL 9005
Supply cable	UK-plug, black RAL 9017, straight, 2000 mm
SMPS	integrated SMPS
Further data	
Connectivity <sup>2</sup>	1 handset
Protection type	II
Protection class	IP20
Relative humidity	30% – 75%
Ambient temperature	+10°C - +40°C

<sup>1</sup> depending on the drive configuration and the control components which are used

<sup>2</sup>(example, depending on control unit type)

All information and specifications in this manual are current at the time of printing. However, because of our company policy of continual product improvement, we reserve the right to make changes at any time without notice.

## ADJUSTABLE BED HANDSETS

---



STANDARD HANDSET



HEAVY DUTY HANDSET

## OUR RANGE

---

### ACTIONS

STANDARD ACTION

HEAVY DUTY ACTION

### BASE

DEVON

RICHMOND

### MATTRESS

LUXURY LATEX

LUXURY MEMORY FOAM

LUXURY REFLEX

LUXURY POCKET SPRUNG

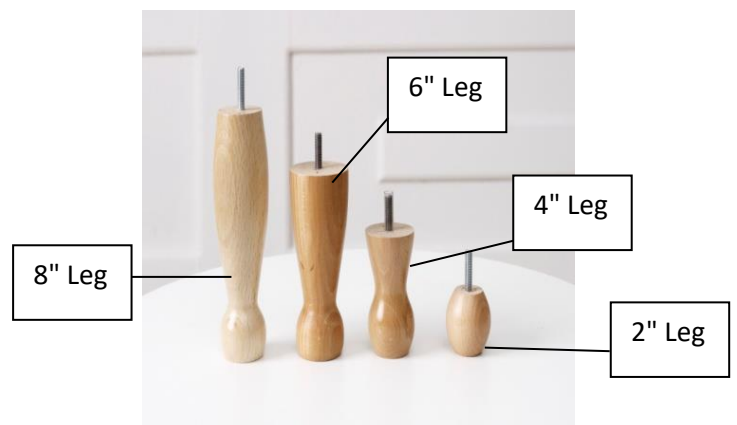
### HEADBOARD

ANNA

### CASTORS:



### LEGS:



## ASSEMBLY INSTRUCTIONS

---

**NOTE:** Before you assemble your bed, you will need a hammer and a screw driver. The position you place your bed in will have to be near a socket outlet or an extinction wire from your bed to the outlet.

### **Step 1**

You should receive your bed in three parts:

1. Base and Action
2. Mattress
3. Headboard





## ASSEMBLY INSTRUCTIONS

---

Carefully remove the bed from the cardboard box.



### **Step 2**

Carefully remove the plastic covering from the bed.



## ASSEMBLY INSTRUCTIONS

---

### Step 3

In front of you, you will have your base with the action inside it. Carefully remove the action and place it to one side. You will work on the base first.

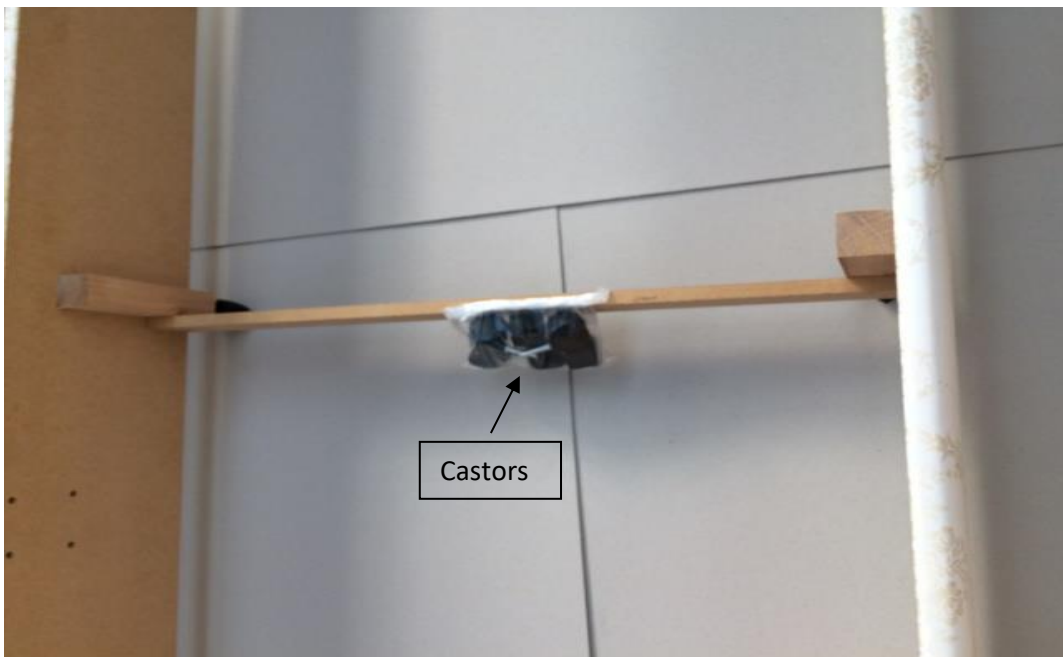


## **BASE ASSEMBLY**

### **Step 4**

#### **Base assembly**

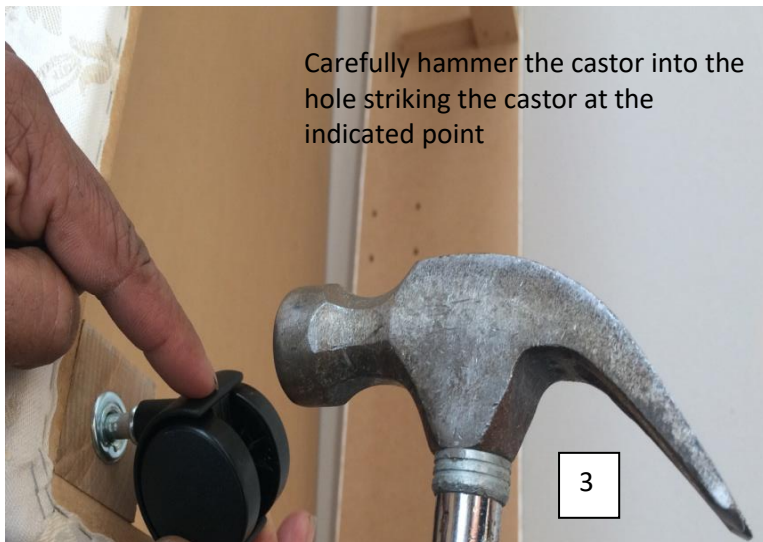
Place the base on its side and remove the castors from their packaging. The castors will be attached to the middle of the base.



### Step 5

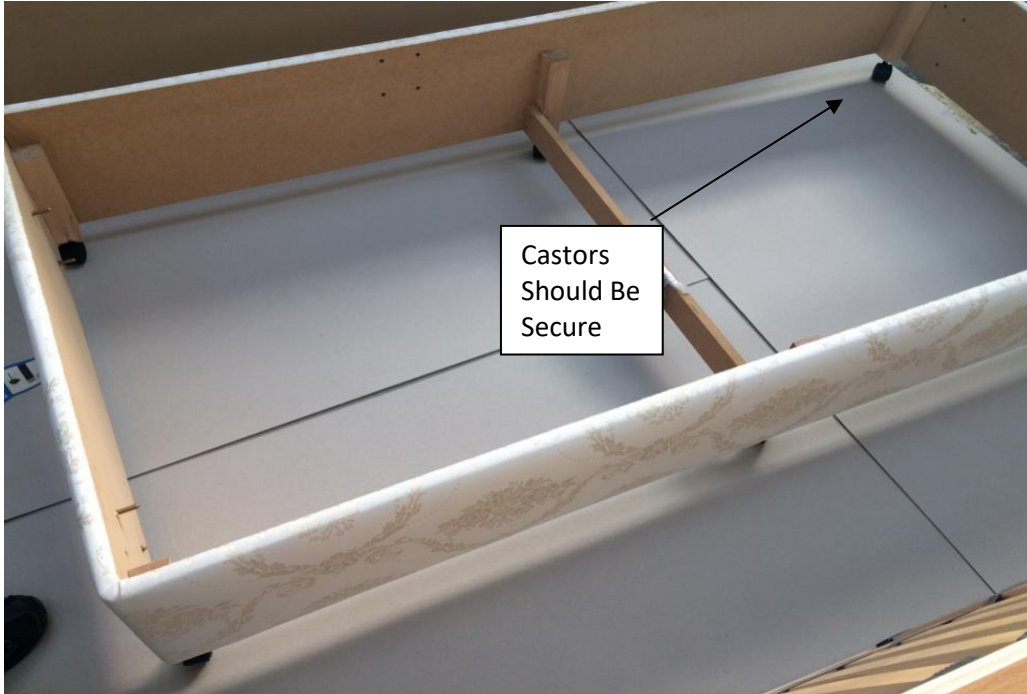
Insert the castors into the pre drilled holes. A hammer should be used for this part.

**Caution:** when using tools please be careful.



**Step 6**

Place the base on the floor



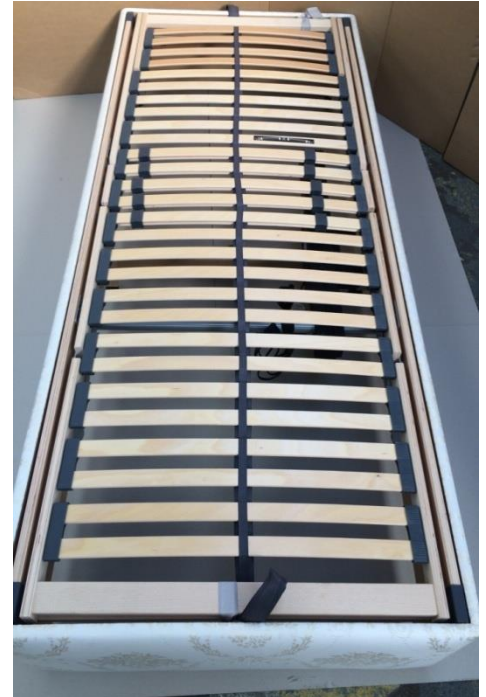
## ACTION PLACEMENT

---

### Step 7

#### Action placement

First carefully place the action into the base. Make sure the action is level when placing it inside. You will need more than one person for this job. This can be done for all types of action.



Note: Make sure you cut the fabric tying the action together and take off the plastic ties and the plug covering on the plug/cable.



**Step 8**

Place the end bar at the foot end of the bed.





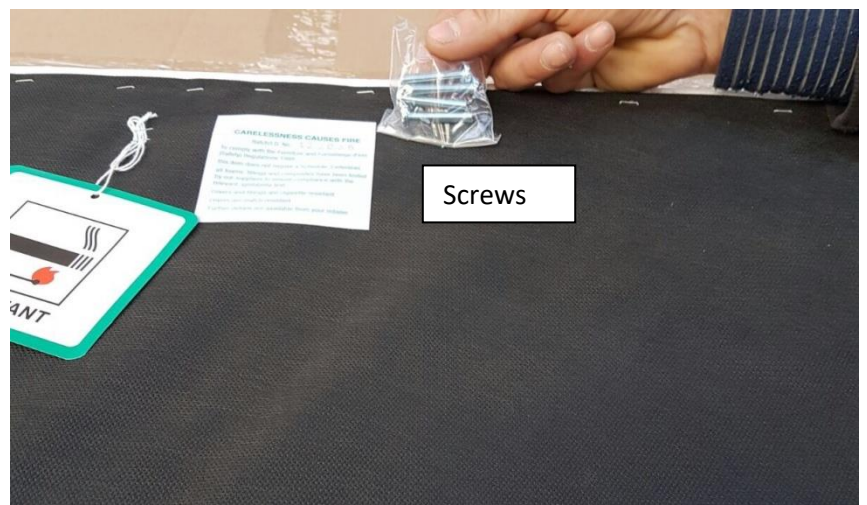
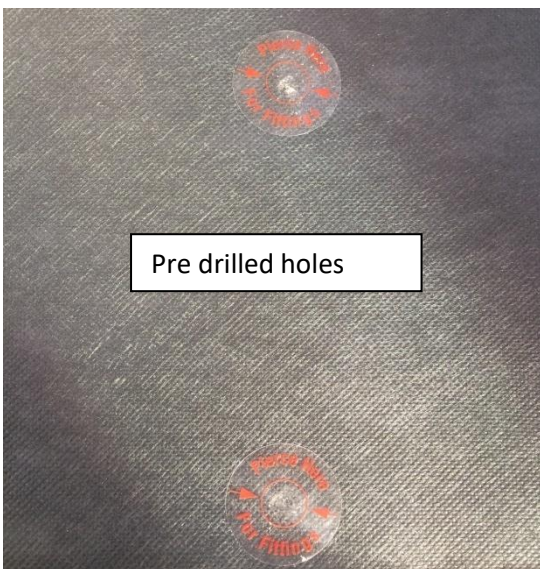
## HEADBOARD ASSEMBLY

---

### Headboard

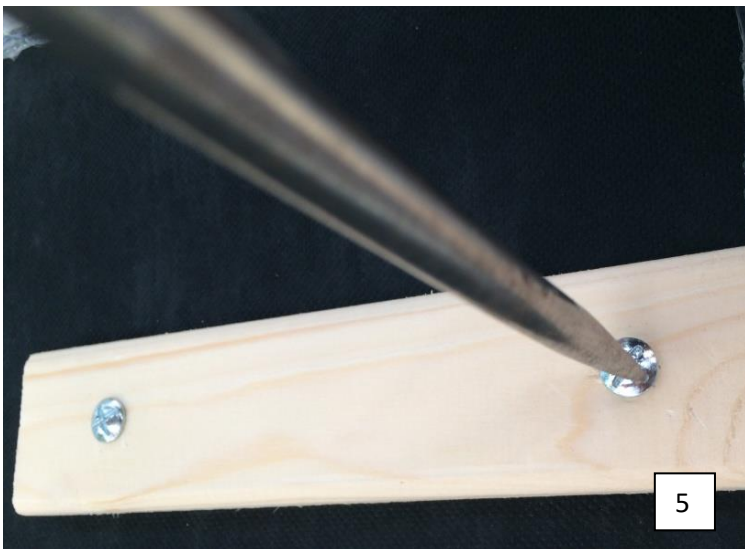
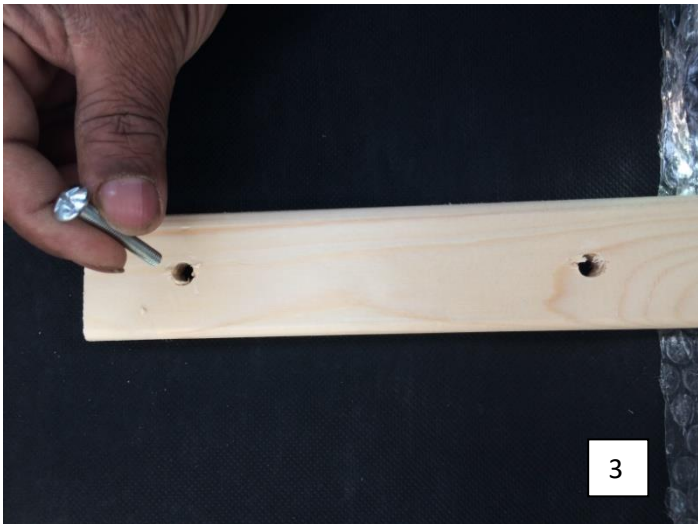
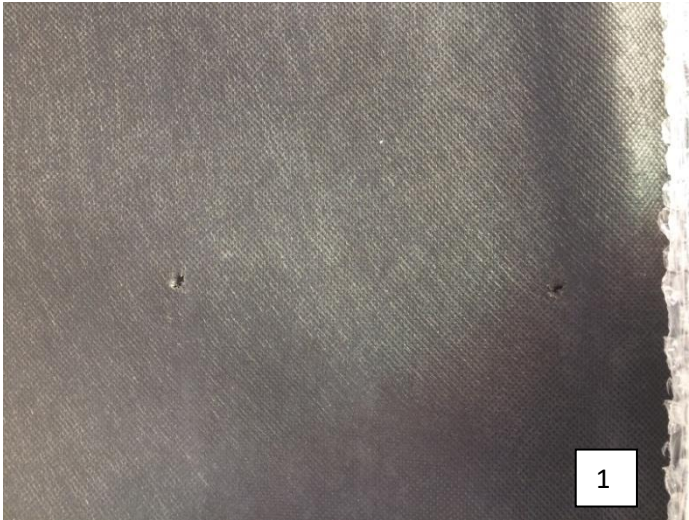
Headboards will come with struts screws and the headboard. The headboard will come with pre drilled holes. The screws will come attached to the back of the headboard.

Remove headboard from Polythene Cover



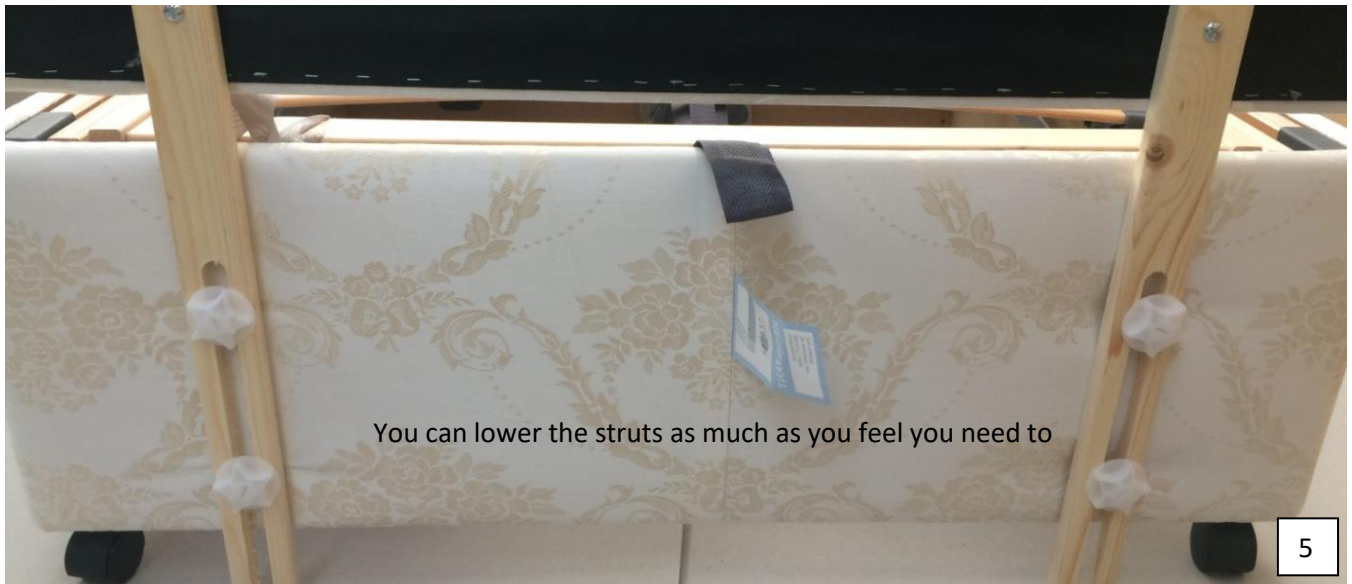
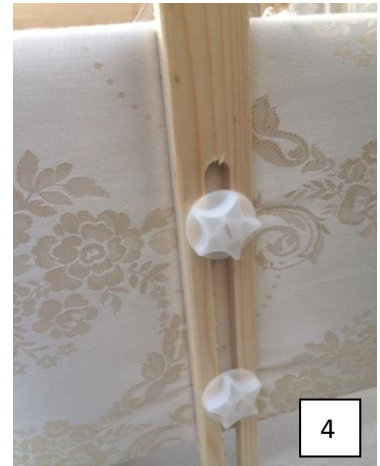
**Step 10**

Position the struts over the holes and insert the screws through the holes in the struts into the headboard holes



## **Step 11**

Unscrew the bolts on the base to about half way and carefully lower the struts into the halfway opened bolts



## MATTRESS

---

### Step 12

#### Mattress

Unpack the mattress from the polythene cover



### Step 13

Slide the mattress onto the bed



## Step 14

Retrieve the Remote control from under the frame (Tied to the motor Bar) unpack the handset from its plastic covering and clip onto the side of the bed as shown below, then insert the mains plug to the plug socket ensuring the power is on. (**Makesure the cable is not pulled tight**). Refer to page 4 of this booklet for operating instructions for your adjustable bed.



## SHALLOW BASE

### Type: Shallow Base



Place the base on its side and remove the legs from their packaging. Screw the legs into the pre drilled holes. The legs will be inside the cardboard box with the base.

## DRAW BEDS.

### Type: Draw beds

If you have ordered a draw bed then when you open your base from the cardboard box you will notice the draws are already in place. Simply assemble the base as per the instructions before. The castors will be stapled inside one of the draws.



