

# Q300M Mini PRO

Compact in size, BIG on performance



Q300-M Mini PRO

**Building on the impressive manoeuvrability and proven ride performance of its predecessor, the Salsa M2 Mini, the original ultra-compact powerchair is back - and it's packed-full of more 'big powerchair' performance than ever before!**



Scan the QR code with  
your phone camera to book  
your free test-drive today.



## MID-WHEEL POWER WHEELCHAIR

---

# GO WHERE OTHER POWERCHAIRS CAN'T WITH THE Q300-M MINI.

**Still as ultra-slim at just 520 mm, the all-new Q300 M Mini is the narrowest TRUE mid-wheel drive powerchair - and with a turning circle of just 1200 mm not only can you go where others can't, you can turn around where they can't too!**

The outdoor performance has been taken to the next level too with features like the patented all-wheel suspension - where every wheel is independently cushioned for a safe and comfortable ride. Tackling 4" kerbs? That's no problem with 14" drive-wheels. Going off-path? The super-strong 4-pole motors will power-through the tricky terrain where others would turn back. And there's no need to race back either, the energy efficiency of the Q300 M Mini squeezes up to 22 miles from 56Ah batteries.

So accessing all areas is a breeze, how about accessorising them too? From custom shroud designs to accent colours, you're sure to ride in style. We've even upgraded the seating to first-class with the multi-adjustable Sedeo Pro. And with plenty of powered options to choose from, the Q300 M Mini will also cater for your ongoing postural and seating needs.



## DRIVE BASES

# COMPACT SPACE? MEET THE ULTRA- SLIM BASE!

Fed up of being told where you can't go? The Q300-M Mini's ultra-compact 520 mm base is so ridiculously narrow, it'll go where other powerchairs can't. Whether it's a complicated living room, a cluttered kitchen or a narrow doorway, the Q300-M Mini fits in to your life, not the other way around.

### ULTRA-COMPACT 1120 MM TURNING CIRCLE

Thanks to its TRUE mid-wheel-drive technology, the Q300-M Mini turns on the spot, for an ultra-small turning circle of 1120 mm. In comparison, RWD and FWD powerchairs need to 'swing' around on its front or rear drive wheels, so the turning circle is wider.



520 MM WIDTH



### WHAT IS TRUE MID-WHEEL-DRIVE TECHNOLOGY?

It's when the powerchair's drive wheels are aligned central to its length. If positioned more towards the front or rear, the turning circle is wider (and there's more of the powerchair swinging around). There's also less weight on the drive wheel, reducing traction. Whereas the Q300-M Mini provides the most-compact turning circle and increased traction and stability thanks to its TRUE mid-wheel drive design.



### SHORT 1060 MM BASE

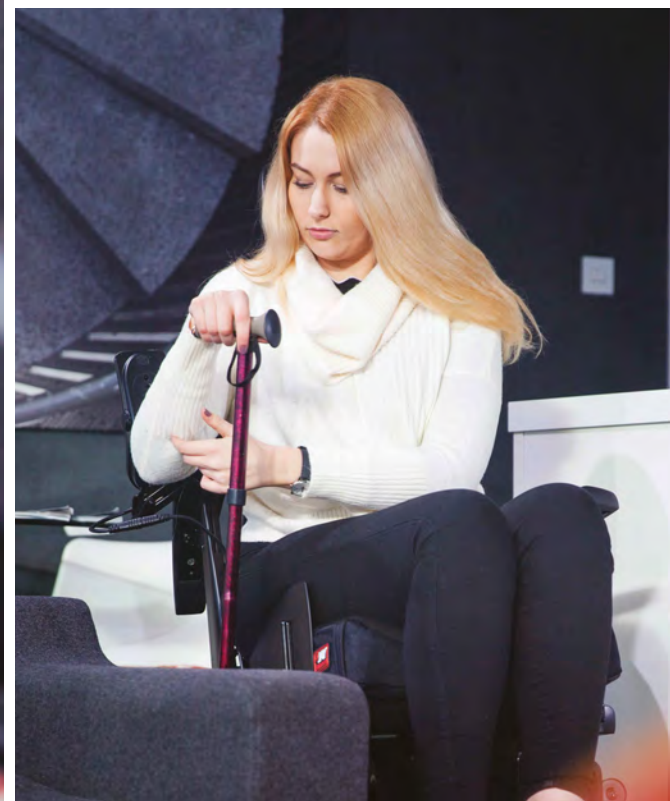
At just 1060 mm in length, the Q300-M Mini will conveniently fit in-and-out of the smallest of lifts and tight spaces such as kitchens with ease. It's also light enough at 103 kg to be usable with most floor lifts too.

INDOORS

GIVES YOU SPACE  
WHEN YOU NEED IT.

**LOW SEAT HEIGHT FROM 415 MM**

Fit comfortably under tables or when driving into your wheelchair adapted vehicle with the Q300-M Mini's ultra-low seat-to-floor height, starting from 16" (with fixed tilt) and 17" (with powered lift/tilt).



### EASY TRANSFERS WITH FLIP-BACK ARMRESTS

If you struggle with transferring in and out of your powerchair, the armrests on the Q300-M Mini easily flip backwards, giving you additional space. You also have a choice of removable or reclining versions too.




### GET TIGHTER TURNS WITH THE CENTRE MOUNT LEGREST

Looking for the tightest turn? The optional centre-mount legrest eliminates the need for traditional legrests at the front of your powerchair. So not only can you make tighter turns without the worry of clipping objects, but you can get closer to tables too. It's also easily adjustable by leg length and angle.



### CONTROLLER GETTING IN THE WAY?

For those times when you need to get just that little-bit closer, you can swing the controller sideways (or optionally swing the armrest backwards).



OUTDOORS

## THE OUT-PERFORMER.

Experience a true compact powerchair with truly sensational outdoor performance. Narrow enough to be nimble in a crowded city, and with the outdoor presence of a much larger powerchair, it's streets ahead of other compact chairs.

### ANTI-PITCH TECHNOLOGY

Traditionally when a powerchair comes to a halt on a slope, the stopping motion of the chair will jolt you forwards. That's a problem we've eliminated with Anti-Pitch technology, so you're kept safe and stable in your seat.

## ALL-WHEEL INDEPENDENT SUSPENSION

With QUICKIE's all-wheel independent suspension, all six wheels remain on the ground whilst climbing and transitioning obstacles. As every wheel has its own suspension, any shocks and bumps are absorbed by that wheel's suspension, so you're assured of a soft and smooth ride.



## PUSH PERFORMANCE WITH 4-POLE MOTORS

Switch to the new 4-pole motors and you'll get an even punchier response to driving commands, greater ability to tackle troublesome terrains and just an all-round more exciting ride.



## THE LEAN, KERB-CLIMBING MACHINE

Don't you hate it when there's no drop kerb in sight? Thankfully the Q300-M Mini with its 12" drive wheels can handle kerbs of up to 3", so there's no need to take the long way round. Looking to handle something a bit trickier? Upgrade to 14" drive wheels and tackle kerbs of up to 4".



### **EASILY NAVIGATE BETWEEN OBSTACLES**

The ultra-slim 520 mm base isn't just useful indoors, you can also effortlessly navigate between tightly parked cars or narrow pathways thanks to the Q300-M Mini's ultra-small 520 mm width.

### **NO NEED TO RUSH BACK WITH 22 MILES RANGE**

Powered by punchy 56 Ah batteries, the Q300-M Mini takes you everywhere where you want to go with an impressive range of up to 36 km (22 miles).





**GREATER TRACTION**

## HOW DO YOU ROLL?

Thanks to its TRUE mid-wheel drive technology, the position of your seat is directly over the drive wheel, so the additional weight is increasing traction onto the wheel and decreasing sliding.

### 12" DRIVE WHEELS

#### THE INDOOR NAVIGATOR

Interested in the most ultra-compact width for the tightest manoeuvrability? The Q300-M Mini comes with 12" drive wheels as standard, providing an ultra-narrow width of 520 mm.

### 14" DRIVE WHEELS

#### THE OUTDOOR PERFORMER

If it's just pure outdoor performance that you're after, then its smooth sailing with the optional 14" drive wheels (for an overall width of 570 mm). Providing the best traction and stability, you can also climb obstacles (such as kerbs) of up to 4".

# YOUR TRAVELLING COMPANION.

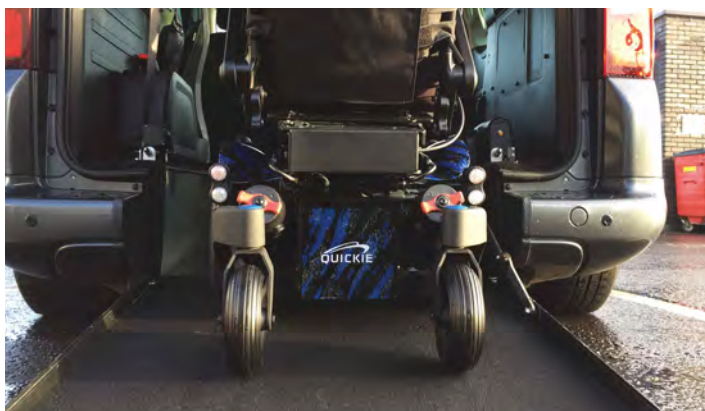
Travelling on public transport? The Q300-M Mini's ultra-small width of 520 mm and 1120 turning circle will help you negotiate even the busiest of journeys.





### **RETAIN TRACTION ON RAMPS**

Traction can sometimes be lost on ramps as the front castor wheels force the drive wheel off the ground. With the Q300-M Mini, the front castor arms move independently from the base, so the drive wheel will retain its traction.



### **WHEELCHAIR ADAPTED VEHICLES**

Thanks to its ultra-low 16" seat height, the Q300-M Mini will easily fit under the steering wheel of your vehicle. Ultra-narrow, it won't catch on the tracks or side panels whilst in your vehicle either.



# SEDEO PRO

The SEDEO PRO seating system combines a highly adjustable and configurable seating frame with the broadest choice of support and positioning options. Through the sheer number of options available, SEDEO PRO seating can be completely tailored to the individual.

Once the SEDEO PRO system is tailored to you it becomes an extension of your anatomy, making it supremely comfortable.

## QUICK & EASY TO ADJUST

The SEDEO PRO frame offers great flexibility as it is fully adjustable. All adjustments can be done in a very quick and easy way using just one tool, even whilst in the chair. It can be easily personalised to suit individual requirements and quickly adapted should your needs change.



# TAILORED SEATING



## **Flexible back cushion**

Discover the new powered recline backrest with 100 mm of anti-shear. A wide range of wheelchair seat cushions and backrest cushions are available for the SEDEO PRO seating system, including the flexible back cushion with adjustable straps and lateral support for unique comfort and easy positioning. This back forms to the shape of you.

## **Power elevating legrest**

The power elevating and length compensating legrest allows you to reach the best position. It is available as a centre mount and a swing away version. You can also choose from a standard centre mount or 70° swing away legrest and a manual elevating swing away legrest.

## **Anti-shear backrest**

Discover the new powered recline backrest with 100 mm anti-shear. This makes sure that there is no sliding between you and the cushion and opens to 30°. Combine this with an elevating legrest to achieve a sleeping position.

## **Positioning elements**

Many positioning elements are available like SEDEO headrests & WHITMYER headrests, swing away lateral thoracic supports, thigh supports or knee supports. All positioning elements are easy to swing away or detach for ease of transfers.

## **Flip back armrests**

The easy to operate flip back armrest gives you free transfer space. You can choose from a removable or reclining version. Also available: single post removable armrest. All compatible with 5 different armpad options.



## ELEVATE AND *DRIVE WITH C-ME*

Say goodbye to waiting around or driving at reduced speed when elevated. With C-Me, you can raise up to 300 mm and drive up to 4.8 kph all at the same time! Now you can keep up with your friends at their pace and be at eye-level all with a touch of a button (with no need to stop).



Scan the QR code with your phone to learn more about C-Me Technology with our informative video



### **RAISING COMFORT WHEN DRIVING ELEVATED**

Unlike other powerchairs, our suspension doesn't lock-out when using C-Me. So you get the same smooth and comfortable ride over uneven terrain, even when elevated! Plus, anti-pitch technology will keep you safe and stable on inclines too.



### STOP SWITCH FOR ADDED SAFETY

There's safety in stopping. Our added remote stop switch allows an attendant to stop a powered wheelchair via an RF remote from up to 30 meters away. Operating distance dependent on the environment.



### ELEVATE WHILST DRIVING WITH ASSIGNABLE BUTTONS

Fed up of complex joystick movements or having to stop to use your seat lift? With our **PATENTED** assignable buttons, you can change any button (or assign a second, long-press function) to activate C-ME (even when driving).



STYLE YOUR RIDE

# ACCESSORISE ALL AREAS.

The Q300-M Mini is packed with over 98 combined colour options - including exciting new pattern shroud designs! You can even colour co-ordinate or contrast your choice with an additional 4 wheel and castor arm accent colours too. So what's your favourite mix?



## ACCENT COLOURS



Green



Orange



Blue



Red



Silver



White



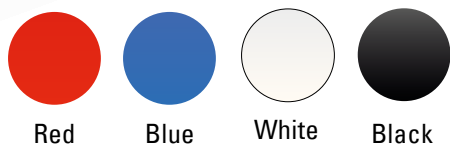
Black

Colours shown within this brochure may vary from the actual colours, due to the limitations by the printing process used.

## CUSTOM SHROUD DESIGNS:



## SHROUD COLOURS:



## LOOKING FOR A TRULY UNIQUE SHROUD DESIGN?

Our Built-4-Me customisations team can help you achieve your own unique custom shroud design exactly to your needs and much more!

For more information, please visit [sunrisemedical.co.uk/built4me](https://sunrisemedical.co.uk/built4me)



POWERED OPTIONS

## POWER-UP YOUR Q300-M MINI.

The Q300-M Mini doesn't just have big-powerchair performance, it has the big-powerchair features too! Whether its powered tilt, lift, recline or elevating legrests, the Q300-M Mini is loaded with the options to meet you clinical and lifestyle needs.

### ENJOY A COMFORTABLE SEATED POSITION WITH TILT-IN-SPACE

Adjust your seated position throughout the day with the Q300 M Mini's 30 degrees of powered tilt. Helping with pressure relief by redistributing your weight from the cushion to the backrest, it'll help to maintain a comfortable seated position with reduced muscular effort .



### RELAX AND RISE WITH LIFT & TILT

Reach new heights with 300 mm of seat lift. Providing safer transfers by giving you a higher position to stand from, seat lift also helps you to reach everyday objects that would otherwise be out of grasp. It'll also help to bring you eye-level with the world around you. Combined with 30 degrees of tilt, you can additionally enjoy greater relaxation and pressure distribution on a whole new level.

### POWERED RECLINE BACK

Prefer to independently adjust your seated position throughout the day? The powered recline back option enables you to adjust the seat-to-back angle in a similar manner to how a seat would recline in a car, helping you relieve pressure and re-distribute your weight.



### POWERED ELEVATING LEGRESTS

If you require additional leg support, powered elevating legrests are a great alternative to manual, helping you to raise your legs whenever you need to in order to reduce swelling.

## CONTROL SYSTEM

# R-NET ADVANCED JOYSTICK.

Every Q300-M Mini comes with the reliable and intuitive VR2 control system - but to really ramp up the on-board technology, select the R-Net advanced joystick. With its large, easy-to-read HD display and simple to control paddle switches, it'll keep you connected not only to your chair, but the world around you too.

## INFRARED TECHNOLOGY

Seamlessly take control of your environment using the integrated Infrared functionality. Control your home entertainment system, TVs, phone, docking stations and other home entertainment systems any any other Bluetooth and i-devices simply through your joystick.

## ASSIGNABLE BUTTONS

Change the function on any button on your joystick to any command you desire, thanks to QUICKIE's patented assignable buttons. You can also assign a second (long press) function to buttons, giving you quicker, simpler and smoother access to functions you commonly use without having to use your joystick.



## SWITCH-IT ALTERNATIVE CONTROLS

If driving with a traditional joystick is not the best option, alternative drive controls allow you to fully experience your chair's driving capabilities and benefits.



## LINK-IT CONTROL MOUNTING SYSTEM

Easily attach special controls to your Q300-M Mini with Link-It. The modules and rods easily link together to connect your control to your chair. Easy to position, minimalistic and simple to use, the next time you need to mount a special control, just link it!





LIGHTS AND INDICATORS

## DETAILS THAT SHINE.

Choose lights and indicators and take advantage to help you navigate during the evening.

Now you've seen all of the Q300-M Mini's features, why not try it for yourself? Arrange a free demonstration today.



Scan the QR code with your phone's camera to book your free test drive.

# TECHNICAL DATA

## Q300-M MINI SEDEO PRO

Max. user weight:	160 kg	Turning Circle:	TRUE Mid-Wheel Drive
Seat width:	385 - 560 mm (15" - 22")	Max. safe slope:	8 Degrees
Seat depth:	400 - 600 mm (16" - 24")	Max. kerb climbing:	70 mm (with 12" drive wheels), 100 mm (with 14" drive wheels)
Seat height:	415 - 490 mm (16" - 19")	Wheel options:	12", 13" or 14" Drive wheels
Backrest height:	530 - 720 mm	Colour choices:	7 Accent choices, 4 shroud colours and 10 custom shroud designs
Backrest angle:	-4, 0, 4, 8, 12 Degrees	Max. range (ISO 7176-4)	36 km (22 miles)
Total width:	520 mm (12") / 560 mm (14")	Wheelchair weight:	From 103 kg (including 41 Ah batteries)
Total length:	1060 mm	Crash tested:	Yes - approved for forward facing transport in a vehicle (ISO 7176-19). Attachment: 4 chair fixing points with 2 double straps rear & 2 single straps front. No anchored belt restraints allowed. The ease of access and manoeuvrability in vehicles depends on the wheelchair size.
Seat tilt:	0 - 12 Degrees (Fixed Tilt) / 0 - 50 Degrees (Powered Tilt)	Transport without user:	Fix the wheelchair safe in the vehicle (e.g. car or plane)
Turning diameter:	1120 mm (44")	Intended use and environment:	For people with limited mobility, indoor and outdoor use. Wheelchair type class B
Max. speed:	6 kph / 8kph / 10 kph		
Battery size:	41 Ah / 55 Ah		
Electronics:	VR2 / R-Net		



IMPROVING  
PEOPLE'S  
LIVES®

Thorns Road, Brierley Hill, West Midlands, DY5 2LD  
t: +44 (0) 845 605 6688 | e: [marketing@sunmed.co.uk](mailto:marketing@sunmed.co.uk)

[sunrisemedical.co.uk](http://sunrisemedical.co.uk)

Sunrise Medical cares about your safety. Please read your owner's manual for safe operating instructions and maintenance guidelines. In line with our policy of continual product improvement, Sunrise Medical reserves the right to make changes at any time, and without notice. For the latest information, please visit [www.sunrisemedical.co.uk](http://www.sunrisemedical.co.uk). If you are visually impaired, this document can be viewed in PDF format at [www.sunrisemedical.co.uk](http://www.sunrisemedical.co.uk)

